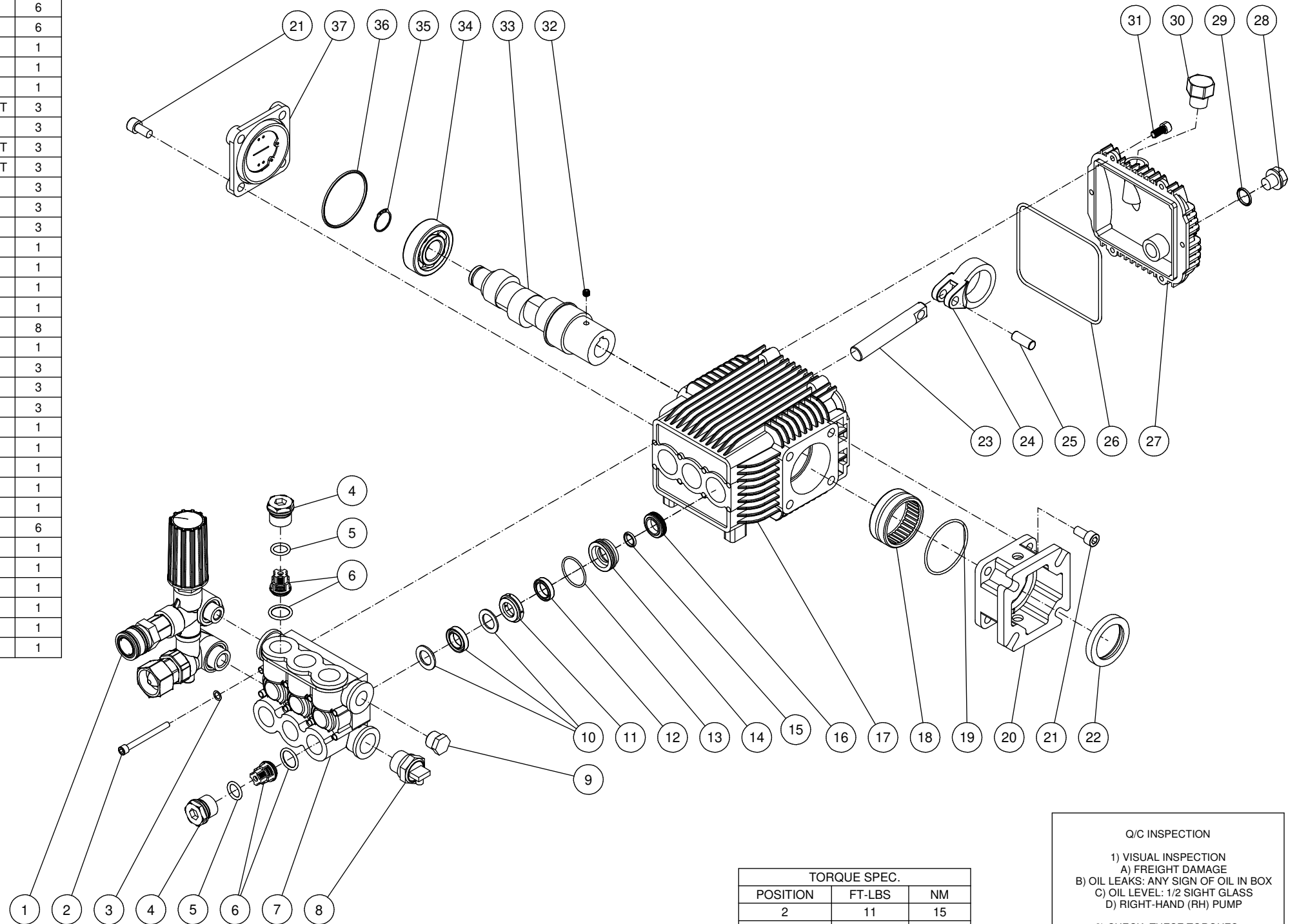


ITEM	DESCRIPTION	PART #	VENDOR	P/L	QTY
1	UNLOADER ASSY - BC14308	8-0630	B14308		1
2	BOLT - M6-1.00P x 55mm	27-0898	B12011		8
3	WASHER - 6.5mm I.D. X 9.8mm O.D.	28-0203	B18006		8
4	VALVE PLUG - M22-1.50P SS	39-0231	BC17028		6
5	O-RING - 18mm O.D. X 2.4mm	25-0622	A13101		6
6	VALVE ASSEMBLY W/O-RING	70-0502	B11106		6
7	MANIFOLD HEAD - BRASS	46-1503	B12001		1
8	VALVE - THERMAL RELIEF 1/2MNPT	22-0005	100558		1
9	PLUG - BRASS 3/8-19 BSPP X 17mm	39-0102	AR1989600		1
10	HIGH PRESSURE PACKING (SEE KIT 70-0501)	N/A	B12013	SEE KIT	3
11	SEAL COMPACTION RING - BRASS	46-1311	B12008		3
12	LOW PRESSURE SEAL - Ø22mm X Ø15mm X 5mm (SEE KIT 70-0501)	N/A	B12055	SEE KIT	3
13	O-RING - Ø26.7mm X Ø1.78mm (SEE KIT 70-0501)	N/A	B12007	SEE KIT	3
14	RETAINER RING - LP	46-1312	B12006		3
15	O-RING - 15mm O.D. X 2.5mm	25-0663	B12115		3
16	OIL SEAL - 24mm O.D. X 15mm I.D. X 6mm	46-1313	B11018		3
17	CRANKCASE - ALUMINUM	46-0617	B11201		1
18	NEEDLE BEARING - 52mm O.D. X 43mm I.D. X 20mm	48-0096	B11027		1
19	O-RING - 51.8mm O.D. X 2.2mm	25-0603	B11005		1
20	MOUNTING FLANGE	46-1314	B11006		1
21	HSHCS - M8-1.25P X 16mm	27-8431	99303900		8
22	OIL SEAL - 50mm O.D. X 36mm I.D. X 7mm	26-0320	A10712		1
23	PISTON- CERAMIC COATED	46-1504	B11091		3
24	CONNECTING ROD	46-1595	B11207		3
25	PISTON - WRIST PIN	46-1505	B11010		3
26	O-RING - 105mm O.D. X 2.62mm	25-0604	B11084		1
27	CRANKCASE COVER	46-1594	B11202		1
28	DRAIN PLUG - STEEL	39-0376	A10900		1
29	O-RING - 14.2mm O.D. x 1.9mm	25-0606	A10802		1
30	OIL CAP - VENTED	46-1593	B11230		1
31	HSHCS - M6-1.0P X 14mm	27-8401	99183700		6
32	UNI5923 - M6-1.00P X 6mm	27-8886	AR820440		1
33	CRANKSHAFT - STROKE 6.50mm	N/A	B11211		1
34	BALL BEARING - 6305	48-0102	B18200		1
35	SNAP RING - EXTERNAL - 25mm I.D.	46-1596	B18004		1
36	O-RING - 55.25mm O.D. X 2.62mm	25-0634	B18001		1
37	SIGHT GLASS ASSY - INC SIGHT GLASS & OIL LVL INDICATOR	46-1597	BC12022		1

PUMP ASSEMBLY				SHAFT	RPM	MAX	MAX	OIL			SHAFT DIA I.D.
PART#	VENDOR#	BORE	STROKE	MARKED	RATED	GPM/LPM	PSI/BAR	oz/mL	INLET	OUTLET	in/mm
3-0415	1506.5A	15mm	6.5mm	#6.5	3400	2.50/9.46	3000/206.84	16.9/500	1/2-14 BSPP	3/8"NPT	0.75/19.05



Parts Call 888-279-9274

TORQUE SPEC.		
POSITION	FT-LBS	NM
2	11	15
4	59	80
21	18	24.4
30	7.4	10

Q/C INSPECTION
 1) VISUAL INSPECTION
 A) FREIGHT DAMAGE
 B) OIL LEAKS: ANY SIGN OF OIL IN BOX
 C) OIL LEVEL: 1/2 SIGHT GLASS
 D) RIGHT-HAND (RH) PUMP
 2) CHECK THESE TORQUES:
 A) HEAD BOLTS - 11 FT-LBS
 B) VALVE CAPS - 59 FT-LBS
 3) ACL 6.5
 LEVEL I

REPLACEMENT KITS					
KIT #	VENDOR #	DESCRIPTION	ITEMS	# OF ASSEMBLIES	# OF CYLINDERS
70-0501	B11102	KITS - PACKINGS	10, 12, 13	3, 3, 3	3
70-0502	B11106	KITS - VALVES W/ O-RING	6	6	3

Mi-T-M Corporation

SCALE: NTS DATE: 8/5/20 DRAWING SIZE: B APPD: DRAWN BY: CH
PUMP - 1506.5A - 2.5GPM @ 3000PSI
 DRAWING/PART NO:
 3-0415

M:\Drawings\Part Numbers\03\3-0415.iam